

Date 4 January 2024
Email NewHomesSmallSites@camden.gov.uk

Development
Supporting Communities
London Borough of Camden
5 Pancras Square (4th floor)
LONDON
N1C 4AG
Phone: 020 7974 8792
camden.gov.uk

Dear Resident,

Have your say: proposed sale of garages at Kilburn Vale Estate
Consultation closes Friday 26 January 2024

Drop-in session at Kilburn Library Centre

Date: Thursday 25 January 2024

Time: 3:30pm to 6:30pm

Address: 12 to 22 Kilburn High Road, NW6 5UH

Following our letter on 4 December 2023, we would like to invite you to comment on the proposed sale of the garages at Kilburn Vale Estate.

The site we are looking at in your neighbourhood is the land under and in front of the six garages at the West End Lane entrance of Kilburn Vale Estate. Please see an indicative plan enclosed which shows the proposed site for sale.

This proposed sale is part of the council's New Homes for Small Sites programme, which aims to build new affordable homes for local residents on small pockets of suitable land across Camden. We previously consulted on the idea of building on a site at Kilburn Vale in 2022 and 2023, and this proposed sale follows the outcome of that consultation.

The sale of this land would directly fund the council to build much-needed new council homes for Social and Camden Living Intermediate Rent and enable us to make a meaningful long-term investment in affordable housing for the borough. If a sale is successful, a portion of the proceeds would be given back to the estate to fund improvements for local residents.

Drop-in session: Thursday 25 January, Kilburn Library Centre, 3:30pm to 6:30pm

As part of our consultation on this proposal, we are running a drop-in session on Thursday 25 January from 3:30pm to 6:30pm at Kilburn Library Centre, 12 to 22 Kilburn High Road, NW6 5UH. At this event you will be able to view more information about the proposed sale and the New Homes for Small Sites programme, share your thoughts on this project, and suggest ideas for estate improvements should the sale go ahead.

If you cannot make it to our drop-in session, you can share your thoughts on the proposed sale by:

- Kilburn Vale Garages c/o Annalee Jones
Development
Level 4, 5 Pancras Square
London N1C 4AG

After the consultation is complete, we will write to residents to share the outcome of the consultation. If the sale goes ahead, we will provide more information about this then.

Contact us

Yours sincerely

OK Jones

Large print?

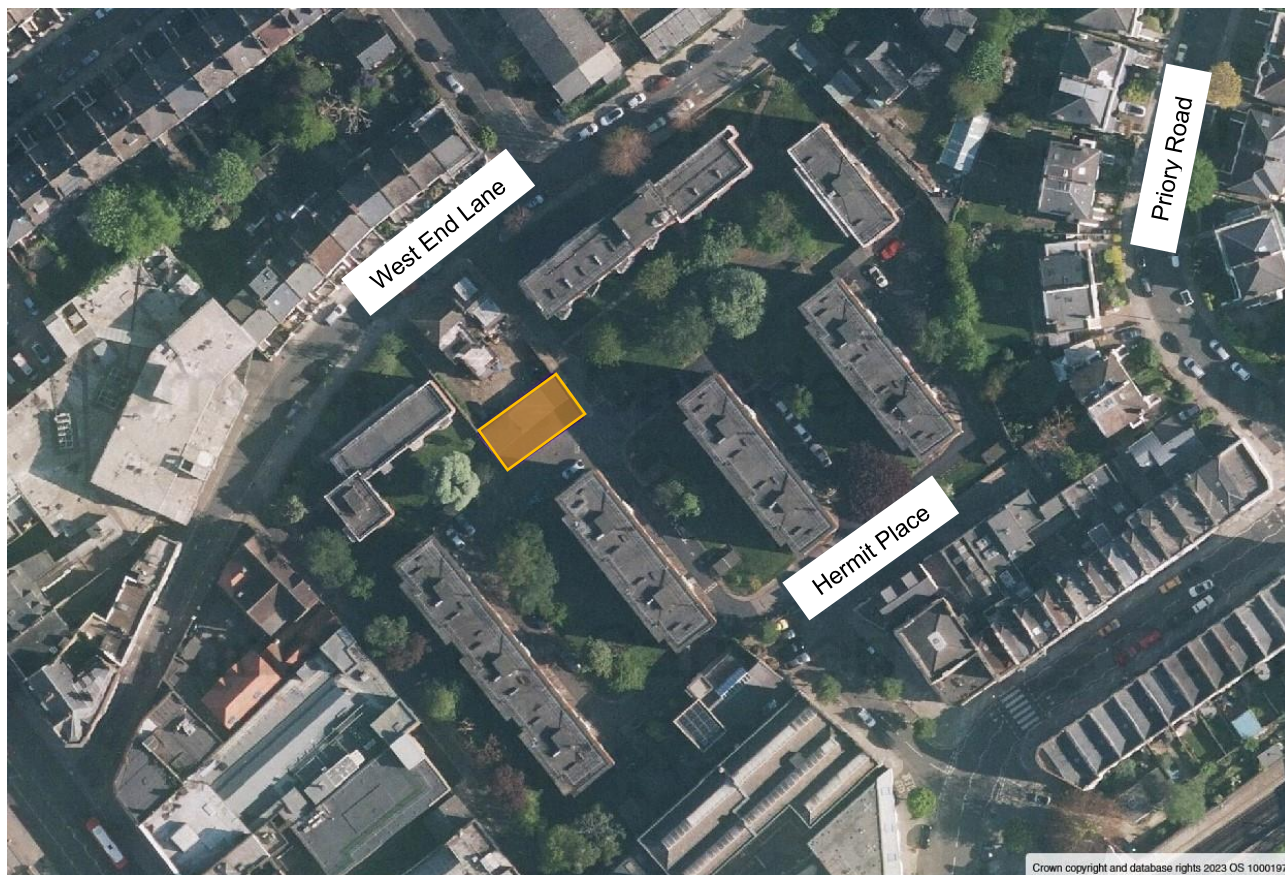
020 7974 8792

NewHomesSmallSites@camden.gov.uk

Translation?

tradução? traduction?
¿traducción? tłumaczenie?
انۛءچ رتلا؟ অনুবাদ?
turjumaad? asekyer?

Land at Garages at entrance to Kilburn Vale Estate
Indicative plan of proposed site for sale



Key



Indicative plan of proposed site for sale